

Multi-Purpose Tracking and Digital Video Recorder

MT6

MT6 is a **MPEG-4** embedded standalone mobile DVR for capturing video, audio and geographic location data. *All recorded information is stored on removable, shock-resistant hard disk storage tray* or a Compact Flash card. Easy playback recorded video and download data through the USB (2.0) port.

Each DVR can be outfitted with a GPS receiver and GPRS modem allowing online (Figure1) and offline tracking (Figure2). The GPS determines the location of vehicle. This GPS information and alarm snapshots can be sent back to the server over the mobile data network. With common navigation software, user can locate the vehicle and receive images from their vehicle (Figure1). User can also receive SMS text message on their cell phones for alarm notification.

The DVR's unique design of SOC, Linux platform, Fanless, lower power consumption, compact size, and powerful functions make it ideal for vehicle tracking and covert surveillance and any kind of mobile assets.



Features

- Tracking capability
- Still image transmission
- SMS alarm notification
- Removable hard disk
- MPEG-4 compression
- OPT: -10~+70 °C
- Fanless design
- Low power consumption: Max: 12W
- Back up via CF card · USB
- Watch dog function
- Overwrite function
- Motion/Video lose/Alarm/Pre/Post recording modes
- 2.5Grms (5 ~ 500 Hz) of pattern anti-vibration design
- Programmable picture quality/recording frame rates/storage device

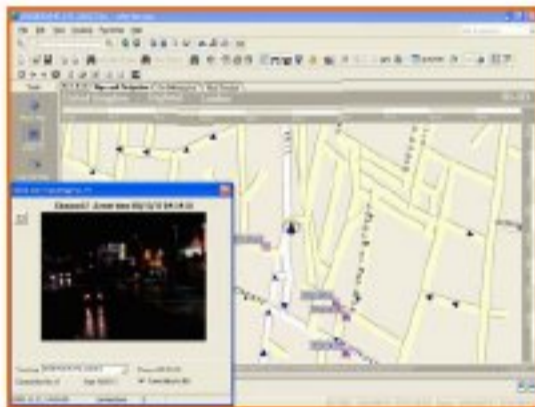
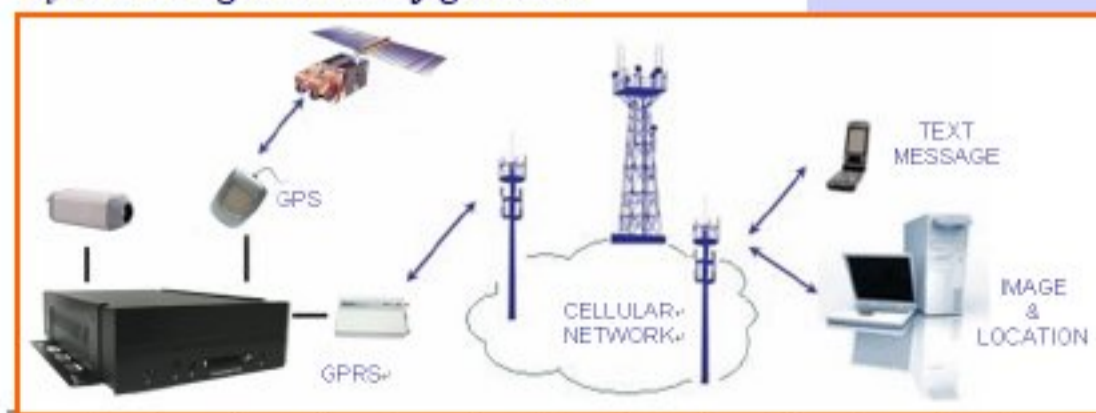


Figure 1-Locate your vehicle and receive images from your vehicle



Figure 2-View video, audio, location, speed and route during playback

System Integration Configuration



Applications

- ◆ Aircrafts
- ◆ Buses
- ◆ Coaches
- ◆ Cash carriers
- ◆ Dumpers
- ◆ Industry vehicles
- ◆ Investigation vehicles
- ◆ Military trucks
- ◆ Motorcycles
- ◆ Police vehicles
- ◆ Private cars
- ◆ School buses
- ◆ Taxis
- ◆ Trucks
- ◆ Yachts

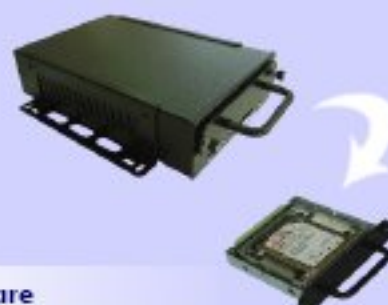
Multi-Purpose Tracking and Digital Video Recorder

MT6

Specifications

Video signal system	NTSC or PAL
Video input	1x BNC or 4x BNC
Video output	1x BNC
Audio input	2x BNC
Audio output	1x BNC
Video Quality	1 CH: 640x480; 4CH: 320x240
Recording frame rate	30/25 FPS (NTSC/PAL) for each channel
Recording mode	Continue/interval/scheduled/event
Playback speed	FF/RW x1, x2, x4, x8, x16
Search mode	Date/Time/Event/Alarm recording
Pre/Post recording	1~10 min
Storage	2.5" IDE HDD (Up to 120GB) CF card (Up to 8GB)
Digital in/output	6x Alarm in/2x Alarm out
USB port	1x USB 2.0
Control port	1x RS-485
Network port	Ethernet 10/100M RJ 45
Serial port	2x RS232 (GPS · GPRS)
Dimension (mm)	274(W)x160(D)x 55(H)
Weight (Kg)	2.3
Power supply	10~30V
Power consumption	12W (maximum)
Operation Temperature	-10 ~ +70°C (CF card) 5~55°C (with HDD; No cooling fan)
Anti-vibration	2.5 Grms (5 ~ 500Hz; random)
Operation mode	OSD menu (On Screen Display)
Video Display	Real Time

Note: Product specifications and features are subject to change without prior notification.



PC software

Playback software	Quick Time 6.5 or 7.2 E-Player
E-Online & Off line tracking	Contact us
GIS · E-Map	Contact us

Accessories

GPS receiver	GT321
GSM/GPRS modem	MTCBA-G
Sensors	Wet contact sensors

Certification

CE	NEI-EMC-1-05E0122A
FCC	NEI-FCCE-1-05E0122A

Physical Dimensions



Astral Electronics
Email: astralelectronics@bigpond.com
02 4722 5330